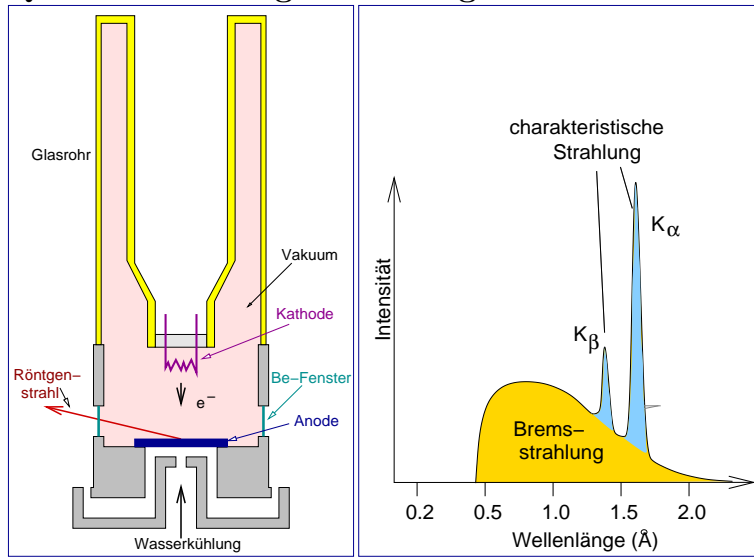


## 4. Röntgenbeugung (Pulvermethode)

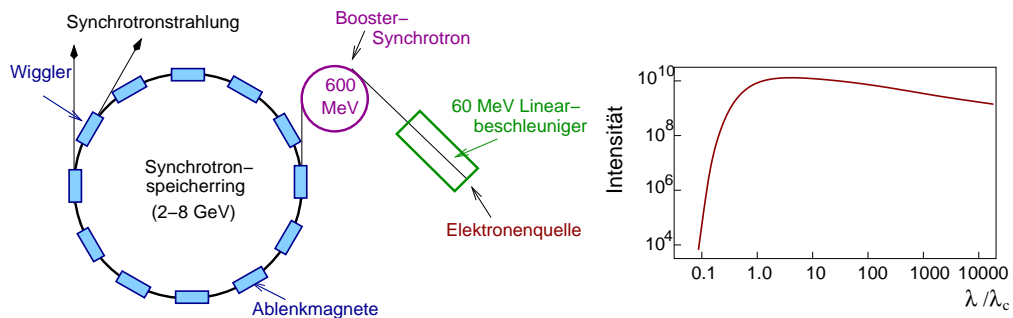
### 4.1. Apparatives

#### Quellen für Röntgenstrahlung



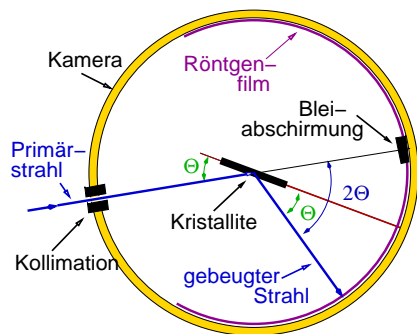
	E [eV]	$\lambda$ [Å]
Mg	1254	9.88
Al	1487	8.34
Cu	8046	1.5413
Mo	17450	0.7107

Röntgenröhre mit Spektrum

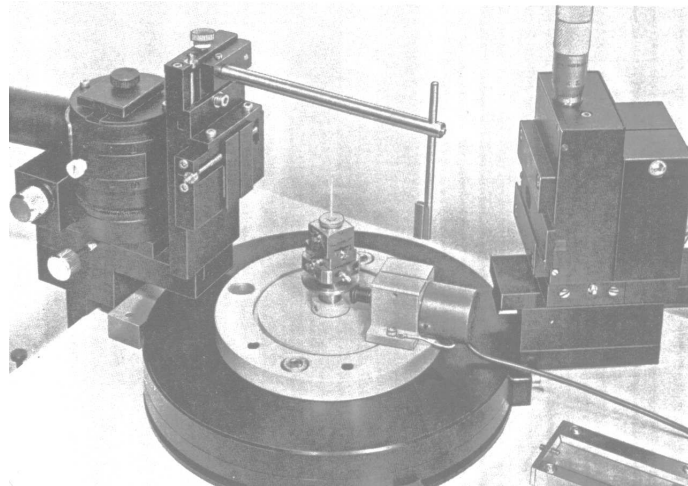


Synchrotron-Speicher-Ring mit Spektrum

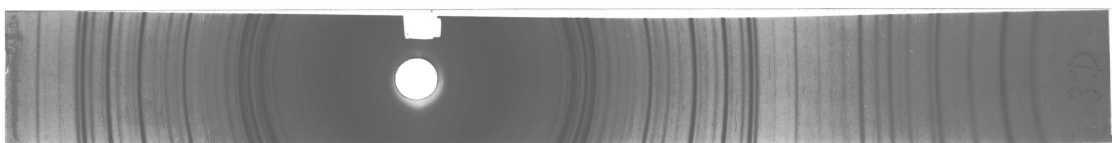
#### Probe, Detektoren, Diffraktometer



Debye-Scherrer-Kamera



Pulverdiffraktometer



Debye-Scherrer-Film