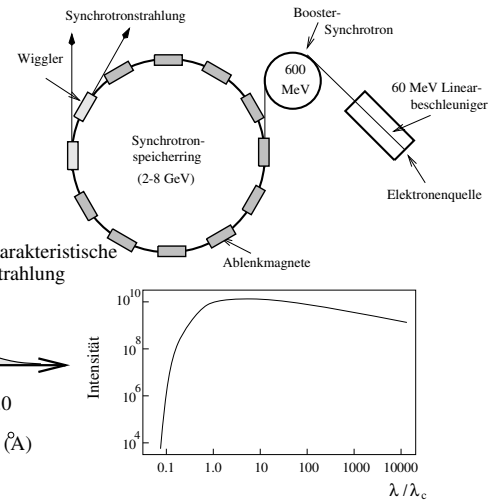
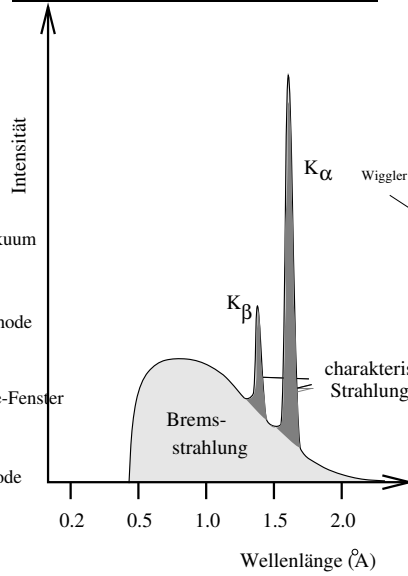
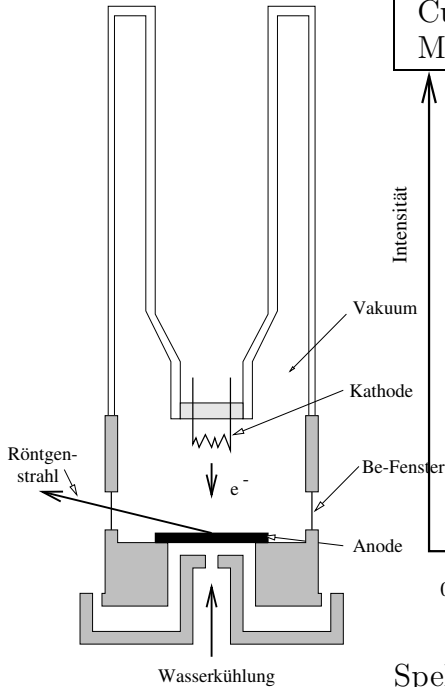


### 4. Röntgen- und Neutronenbeugung I (Pulvermethode)

#### 4.1. Apparatives

#### Quellen für Röntgenstrahlung

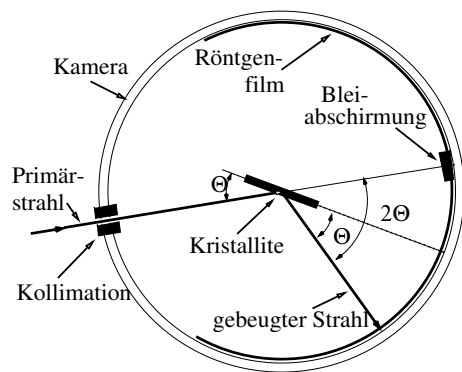
	E [eV]	$\lambda$ [Å]
Mg	1254	9.88
Al	1487	8.34
Cu	8046	1.5413
Mo	17450	0.7107



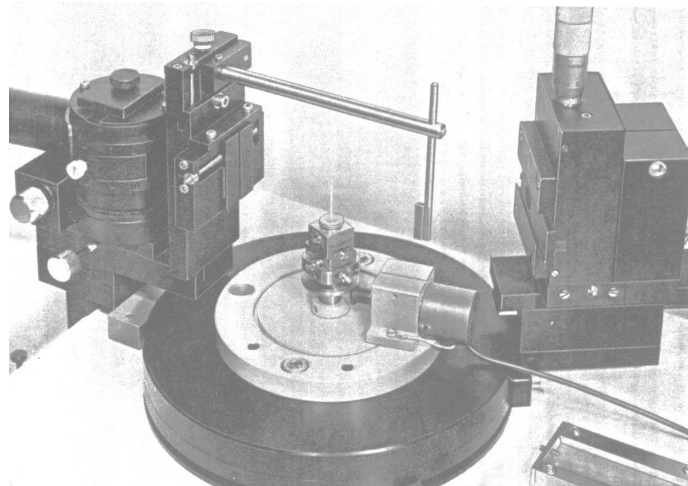
Spektrum einer Cu-Schnitt durch eine Röntgenröhre

Synchrotron-Speicher-Ring mit Spektrum

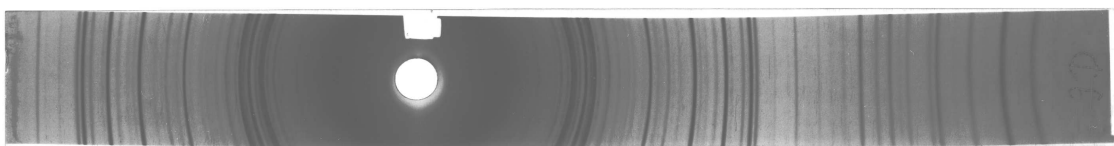
#### Probe, Detektoren, Diffraktometer



Debye-Scherrer-Kamera



Pulverdiffraktometer



Debye-Scherrer-Film